

NATURAL CAPITAL PLATFORM MEETING

7th June, 2014, Ha Noi, Viet Nam

Mapping Global and Regional Natural Capital Initiatives



Michael Parsons Ph.D
Policy Adviser to the Minister
MONRE

What is Natural Capital?

**All environmental goods and services
contributing to human well-being**

Natural Capital and Nature – Same or Different?



Natural Capital, Natural Resources, and Ecosystems Services – Same or Different?

- Natural capital comprises two major components:
- Abiotic natural capital comprises subsoil assets (e.g. fossil fuels, minerals, metals) and abiotic flows (e.g. wind and solar energy).
- Biotic natural capital or ecosystem capital consists of ecosystems, which deliver a wide range of valuable services that are essential for human well-being – ecosystem services.



Pollination

**Pollination is worth
US\$190 billion a year
to global agriculture**





World Forum on Natural Capital



<http://www.naturalcapitalcoalition.org/>



The Natural Capital Coalition is a global platform which brings together the many different initiatives and organizations working in natural capital under a common vision



NATURAL CAPITAL
PROTOCOL
PRINCIPLES AND
FRAMEWORK

Draft
23 November 2015

Natural Capital Protocol

Why?

To help business make better decisions about natural capital use.

Why?

Because natural capital is being used at a rate of 50 percent more per year than the earth can replenish, and this rate of depletion is accelerating.

<http://www.naturalcapitalcoalition.org/natural-capital-protocol.html>





<https://www.wavespartnership.org/en>

Wealth Accounting and the Valuation of Ecosystem Services

Forest accounts - Costa Rica

Ecosystem accounts – Peru

Mineral Accounts - Rwanda



Experimental Biodiversity Accounting as a component of the System of Environmental-Economic Accounting Experimental Ecosystem Accounting (SEEA-EEA)



Natural Capital Dialogue

Nay Pyi Taw, Myanmar

28 January 2015

**Increasing Investments in Natural Capital in the
Greater Mekong Subregion**

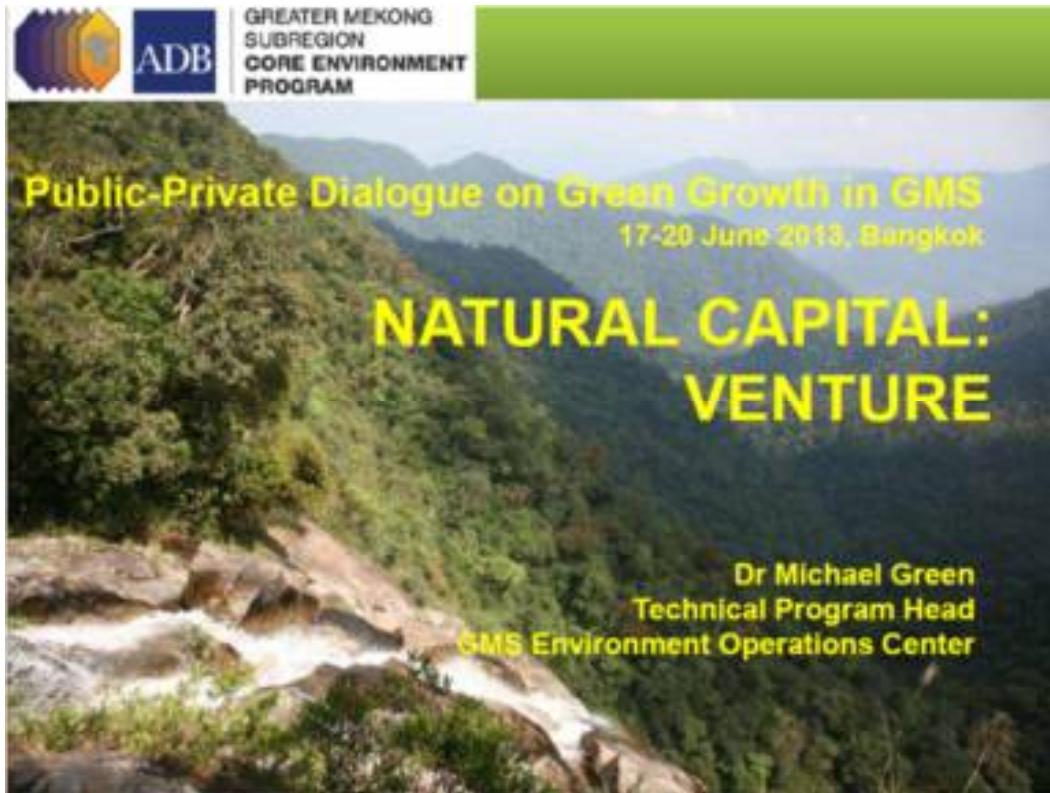


Natural Capital Business Forum

Nay Pyi Taw, Myanmar

27 January 2015

***Theme: Investing in Natural Capital:
Public Private Cooperation for Future Prosperity
in the Greater Mekong Subregion***



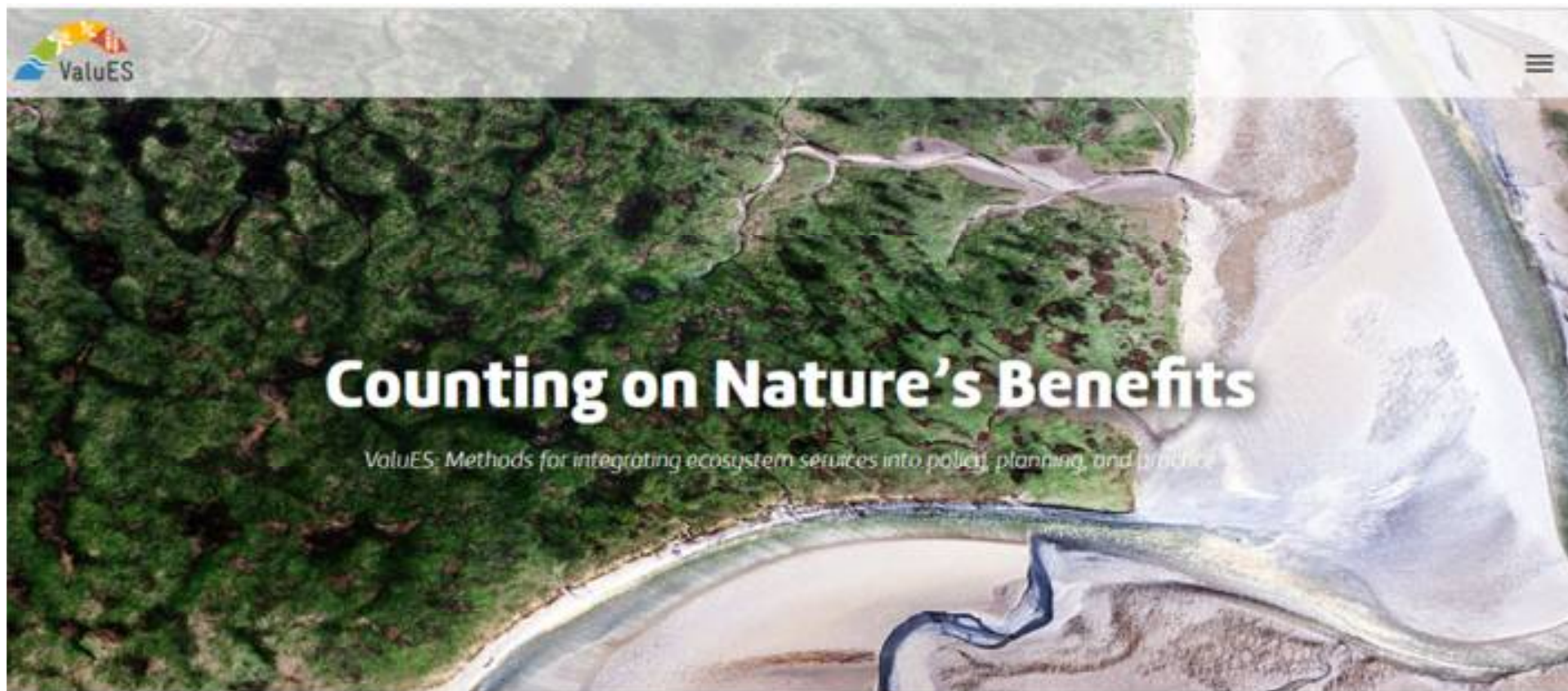
GMS Core Environment Program (2012-2016)

Regional platform led by GMS Working Group on Environment (GMS environment ministries)

Transnational landscape approach to secure and wisely use natural capital

Guiding Principles:
Secure natural capital stocks
Optimize allocation of scarce resources

<http://www.aboutvalues.net/>



ValuES: Methods for integrating ecosystem services into policy, planning, and practice

<http://www.ilternet.edu/>



<http://www.lter-europe.net/elter/about>

- [Part of the LTER-Europe network](#) of national networks (25 countries with a pool of around 400 LTER Sites and 35 LTSEER Platforms). LTER-Europe is the formal European regional group of the global ILTER network. It provides multiple networking activities with permanent governance structures.

eLTER H2020 project - Integrated European Long-Term Ecosystem & Socio-Ecological Research Infrastructure

http://ec.europa.eu/environment/nature/knowledge/ecosystem_assessment/index_en.htm



Mapping and Assessment of Ecosystems and their Services - MAES

<http://www.esmeralda-project.eu/>

The screenshot shows the ESMERALDA project website homepage. At the top, there is a dark blue header with social media icons for Facebook, Twitter, a plus sign, and LinkedIn on the left. The word "ESMERALDA" is prominently displayed in the center, with a white outline map of Europe behind it. A "Login" button is located on the right side of the header.

Below the header, the page is divided into three main sections:

- Search:** A search bar with a magnifying glass icon.
- Highlights:** A large section with a teal header containing a grid of 32 project highlights. Each highlight features the ESMERALDA logo, a country flag, and a brief description of a country-specific work package (e.g., "Country Fact Sheet Luxembourg (LUX)", "Country Fact Sheet Hungary (HU)", etc.).
- Tweets:** A section titled "Tweets by @ESMERALDA_H2020" showing a tweet from OneEcosystem (@OneEcosystem) that reads: "We offer domain-specific templates such as #EcosystemServices Mapping, Inventory & Models [dx.doi.org/10.3897/oneeco...](https://doi.org/10.3897/oneeco...)".

On the left side of the page, there is a vertical navigation menu with the following items: Home, The Project, Main Outcomes, Work Packages, Insider, Partners, SPS Advisory Board, and Online Library.

ESMERALDA - Enhancing ecoSystem sERvices mApping for poLicy and Decision mAking

<http://www.inspiration-h2020.eu/>



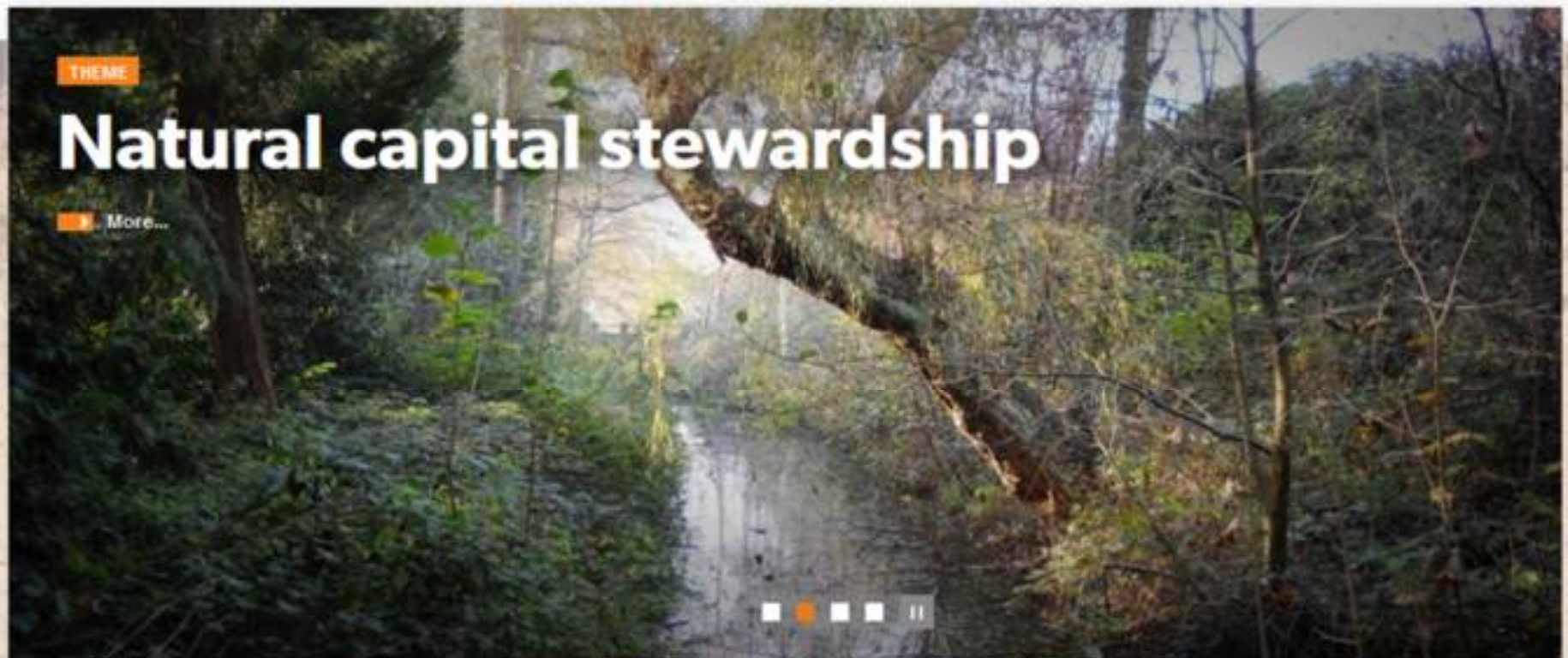
INSPIRATION

INTEGRATED SPATIAL PLANNING, LAND USE
AND SOIL MANAGEMENT RESEARCH ACTION



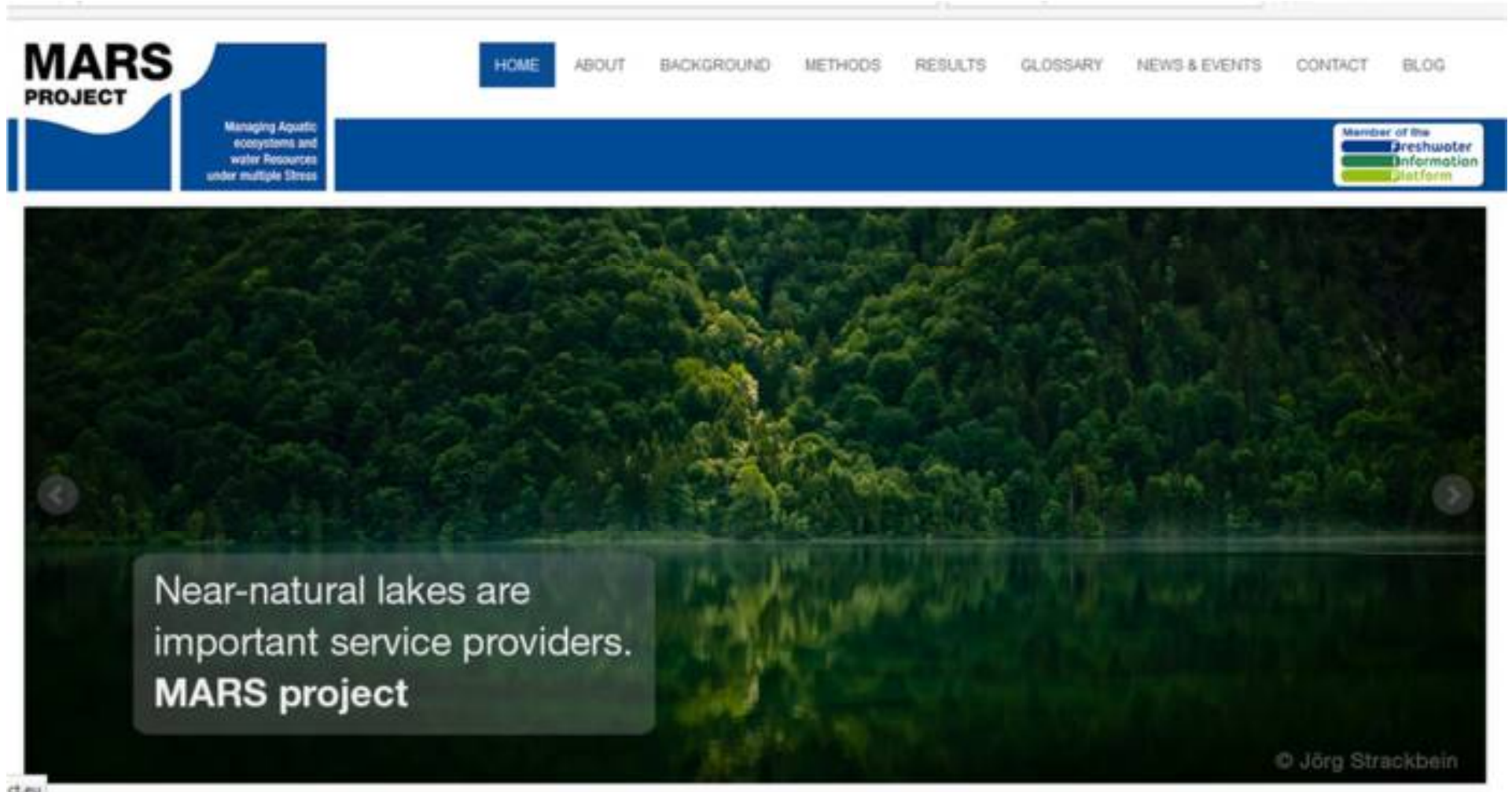
*This project has received funding
from the European Union's Horizon
2020 research and innovation
programme under grant agreement
No 642372.*

▾ ABOUT INSPIRATION ▾ LAND CHALLENGES ▾ ACTIVITIES ▾ OUTCOMES ▾ GET INVOLVED ▾ GLOSSARY



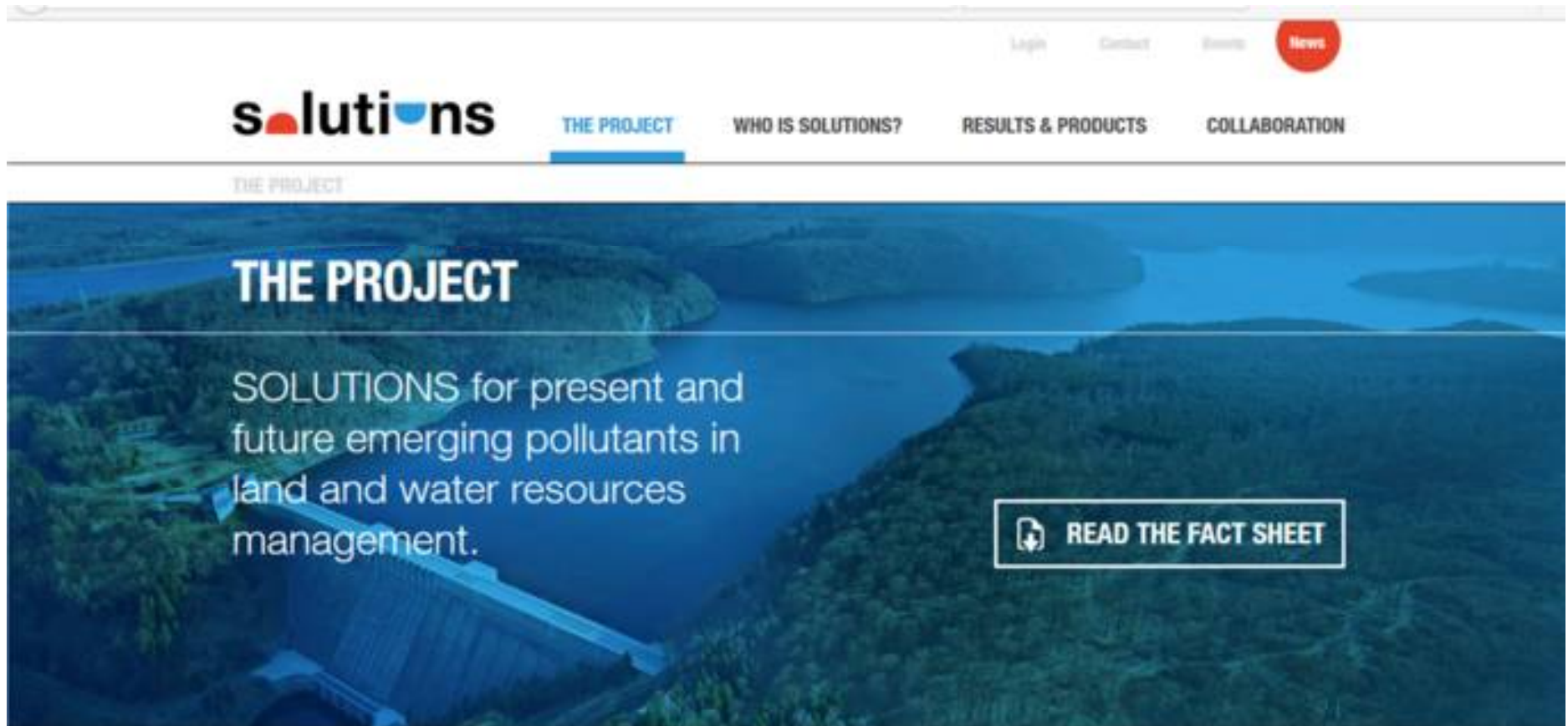
[INSPIRATION](#) - INtegrated Spatial PlannIng, land use and soil management Research AcTION

<http://www.mars-project.eu/>



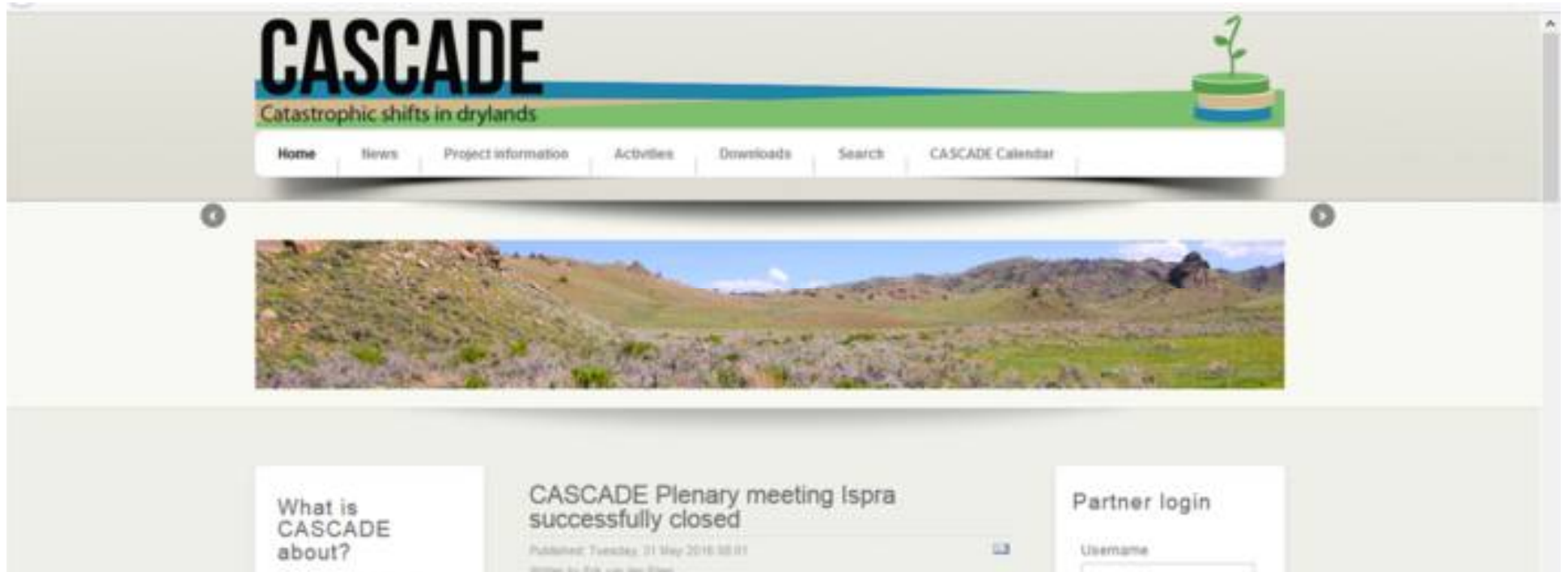
MARS project - Managing Aquatic ecosystems and water resources under multiple stress

<http://www.solutions-project.eu/project/>



SOLUTIONS for present and future emerging pollutants in land and water resources management.

<http://www.cascade-project.eu/index.php>



CASCADE - CAstastrophic Shifts in drylands: how CA n we prevent ecosystem DEgradation

<http://invaluable.fr/language/en/>

invaluable
Valuations, Markets and Policies for Biodiversity & Ecosystem Services

About Invaluable | Publications | Events | Contact us

Support a better use of market-based instruments to better integrate ecosystems services into society

[Know More](#)

Dossier spécial: Analyse institutionnelle des paiements pour services environnementaux (French only)
[> Read more](#)

invaluable
Valuations, Markets and Policies for Biodiversity & Ecosystem Services

Seminar in Paris on Payments for Ecosystem Services - 05th of April 2016
[> Read more](#)

Valuations, Markets and Policies for Biodiversity and Ecosystem Services

<http://www.openness-project.eu/>



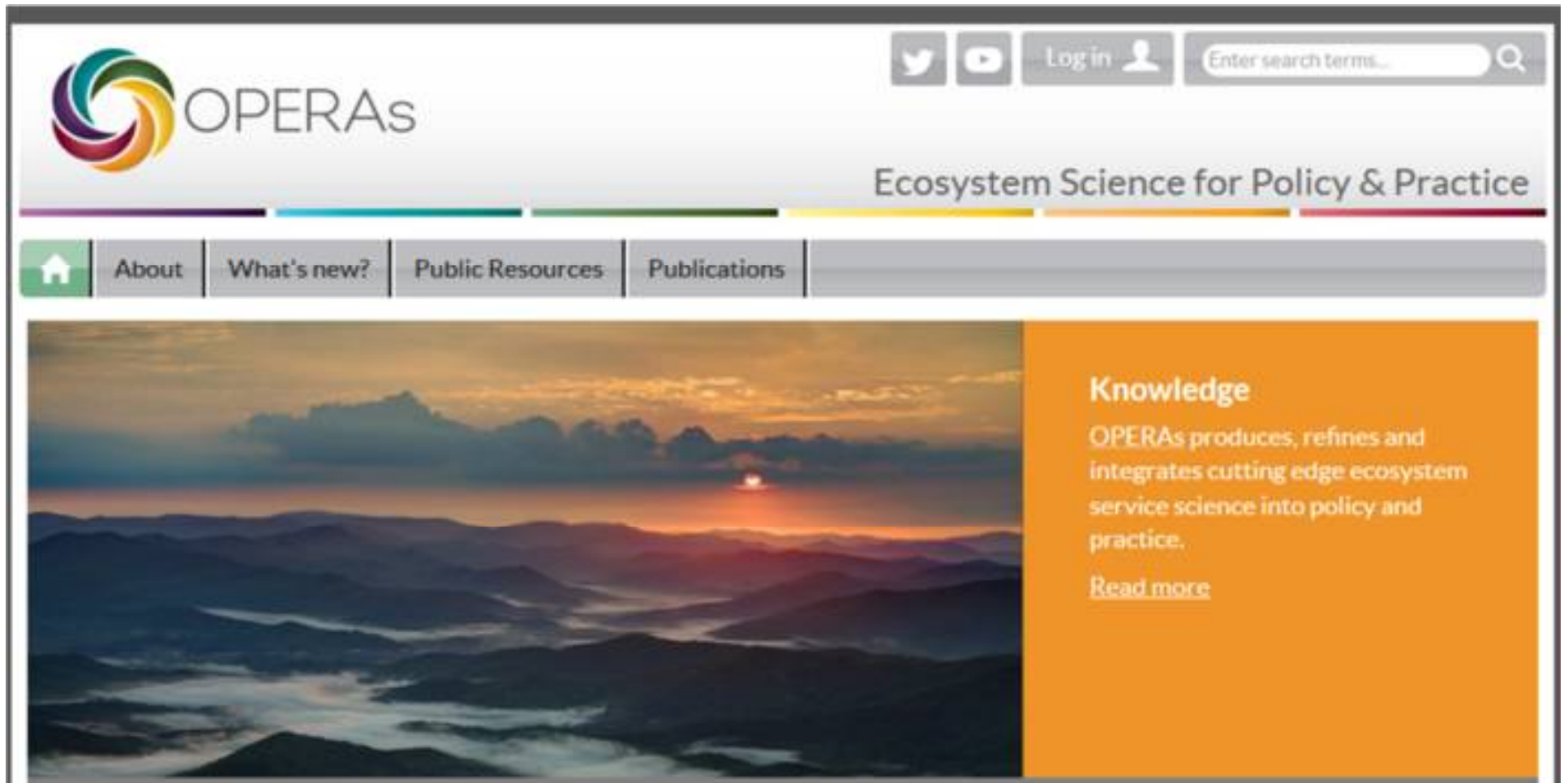
DE | ES | FI | FR | NL



OPERATIONALISATION OF NATURAL CAPITAL AND ECOSYSTEM SERVICES

Operationalisation of natural capital and ecosystem services

http://operas-project.eu/



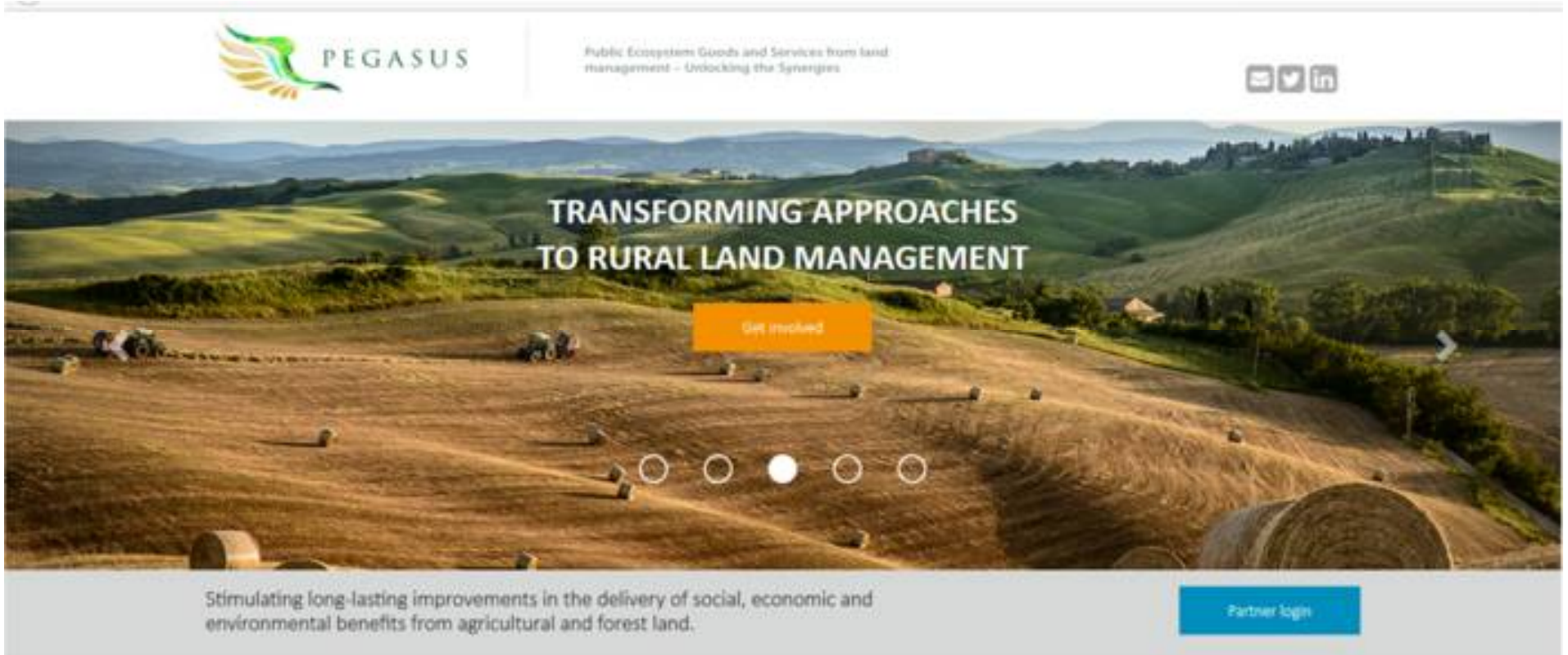
OPERAs - Operational Potential of Ecosystem Research Applications

<http://oppla.eu/what-oppla>

The screenshot shows the website's header with the Oppla logo, a search bar, and navigation links. The main content area is titled 'What is Oppla' and features a graphic that defines Oppla as the combination of Knowledge, Tools, and Community. A descriptive paragraph follows, stating that Oppla is a virtual hub for nature-based solutions across Europe.

a new virtual hub on for the latest thinking on nature-based solutions

<http://pegasus.ieep.eu/>



PEGASUS - Public Ecosystem Goods And Services from land management - Unlocking the Synergies

A photograph showing a coastal town in Chile. The foreground and middle ground are dominated by a massive, dense layer of dead fish, likely salmon, covering the beach and extending into the shallow water. The fish are a reddish-brown color. In the background, a town with several buildings is visible on a hillside, surrounded by lush green trees. The sky is overcast. The text 'RED TIDE CHILE 2016' is overlaid in the top right corner, and 'Xin hết!' is overlaid in the middle left.

RED TIDE CHILE 2016

Xin hết!